



350Z ROADSTER



MICRA



LIVINA



QASHQAI



MURANO



NP300 HARDBODY



NAVARA



PATHFINDER



X-TRAIL



PATROL PICKUP



INTERSTAR



PRIMASTAR

36118

**NISSAN TIIDA**




SHIFT\_ is an English word from a Japanese car company that best embraces our values and the mission of this corporation. No matter where you are in the world, SHIFT\_ is the way we express who we are, how we work and what we are trying to accomplish. Everything we touch, we SHIFT\_. And everything we SHIFT\_ we try to make better and uniquely NISSAN.

Visit our website at: [www.nissan.co.za](http://www.nissan.co.za)

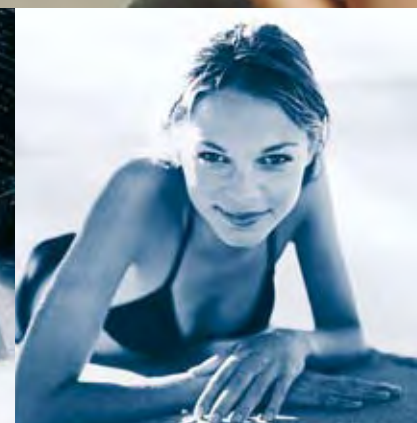
Phone us toll free:  
**0800 NISSAN**  
**0800 647 726**



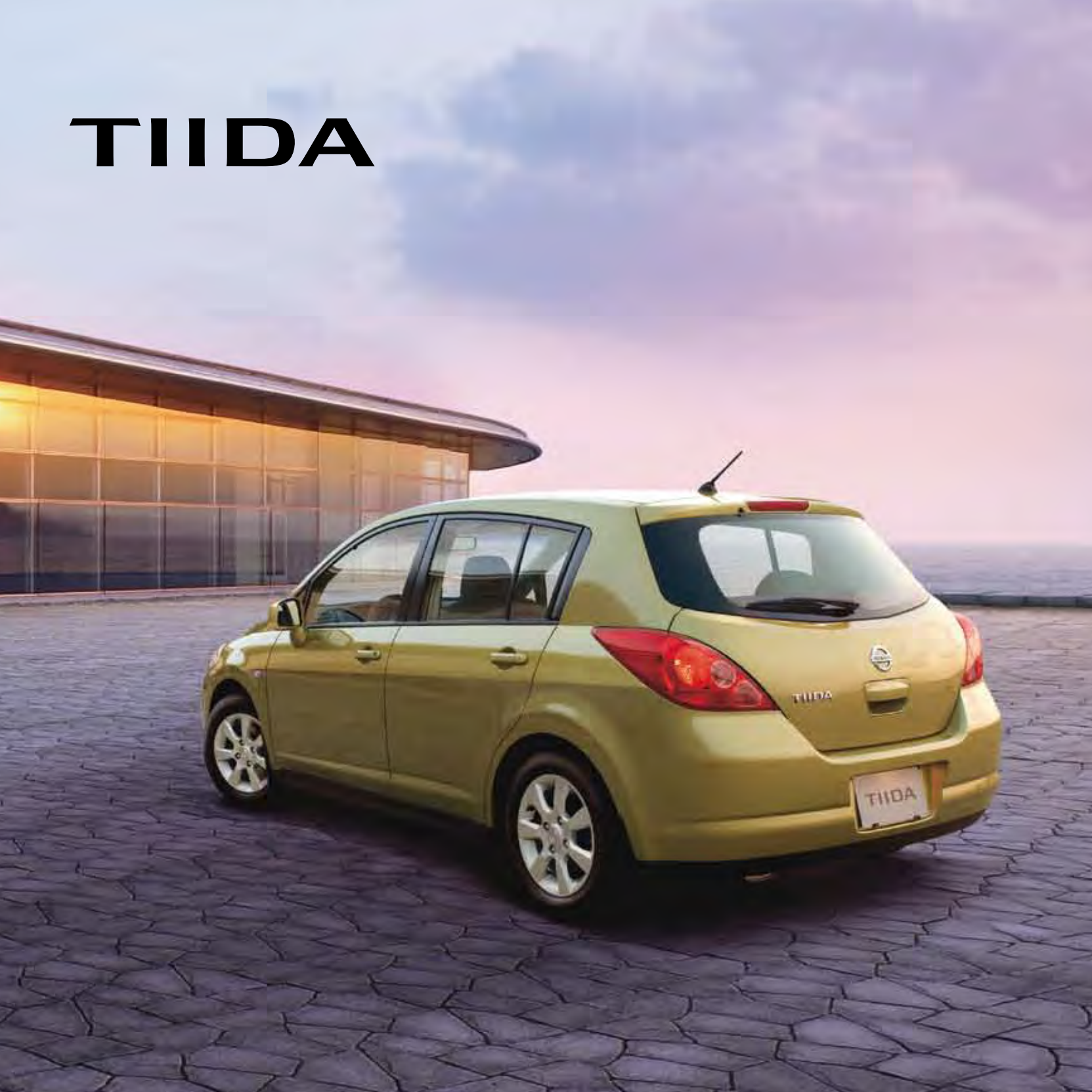
All information, specifications and illustrations contained in this brochure are based on the latest product information available at the time of publication (May 2008). Nissan South Africa reserves the right to make changes at any time, without notice, to colours, material, equipment, specifications and models, and is not responsible for typographical errors. Such changes may affect vehicle pricing and vehicle content. Please check with your local Nissan dealer to receive the most up-to-date information. Due to the limitations of the printing processes used, the colours shown in this brochure may differ slightly from the actual colours of the paint and interior trim materials used. All rights reserved. Reproduction in whole or part of this brochure without the written permission of Nissan is forbidden.

# SHIFT\_

A single word that captures more than a vision. More than a philosophy. It's a dedication to looking at the familiar in a different way. To opening the mind to new ways of thinking. And forever advancing the way people move through the world.



# TIIDA



## CONTENTS

|                                    |    |
|------------------------------------|----|
| CHOOSE TO GET IT ALL               | 02 |
| LARGER THAN LIFE                   | 05 |
| INNER SATISFACTION                 | 06 |
| THE FEEL GOOD FACTOR               | 08 |
| SMART, SOPHISTICATED SENSIBILITY   | 11 |
| CONFIDENCE TO LIVE LIFE TO THE MAX | 13 |
| DIMENSIONS                         | 14 |
| FINISHING TOUCHES                  | 16 |
| COLOUR YOUR WORLD                  | 17 |
| TECHNICAL SPECIFICATIONS           | 18 |

## CHOOSE TO GET IT ALL

They say life's all about decisions. Choices. Well, we say, why choose when you can have it all? The Nissan Tiida is a locally manufactured car designed for ease-of-use, openness and practicality. Giving you what you want and not just what you need. Spirited, contemporary styling. High specification, intelligent features. Luxurious interior. Space. Safety. And then you get behind the wheel... So, one less decision to make.

Tiida means 'dawn of a new day' in Japanese.





## LARGER THAN LIFE

05

To face life head on, you need room to manoeuvre. The Nissan Tiida gives you just that. Its extended roof means a more spacious interior, ample front and rear legroom and generous headspace. Most models have 60/40 split rear seats and the high end 1.6 and 1.8 hatch models have rear sliding and reclining seats that significantly extend the luggage room.

The open, airy feel of the interior is enhanced with 18 storage compartments to keep all your odds and ends secure and out of sight: a glovebox big enough to hold a handbag, a large driver side pocket, a sunglasses holder, cupholders and many more. All adding up to an interior that's clean, spacious, and perfectly in tune with your ever changing needs.



## INNER SATISFACTION

Designed for people who refuse to settle for second best, the Tiida boasts new levels of interior refinement and modern sophistication. From the super soft, high quality upholstery and interior materials, to the luxurious atmosphere created by gentle, welcoming lighting, the Nissan Tiida's interior is elegant. Indulgent. And thoroughly rewarding.

The moment you slide behind the wheel, you'll revel in the superb comfort of the wide, well-tailored seats. The carefully coordinated interior space of the hatch is enhanced with a chic black colour theme, accented with silver trims. Notice the high levels of finishing and flush fitment? The sophisticated moulding of the dashboard? Get used to it. With the Nissan Tiida, luxury quality is no longer reserved for luxury vehicles.



High-level features and sporty good looks mean nothing without performance to match. Which is why you'll really enjoy the Nissan Tiida. Put the key in the ignition. Buckle up. Engage. And enjoy ride quality like never before.

Powered by an advanced, all-new aluminium engine that delivers excellent fuel economy, the Tiida is ultra responsive. The high-end 1.8, 16 valve DOHC engine comes equipped with a 6 speed gear box, giving you all the power and acceleration you need, whether you're driving around town or opening her up on the freeway. Engine power is important, but quietness and smoothness can't be underestimated. Extensive use of sound absorbent materials helps reduce road noise, while a new pendulum mount engine system reduces vibration, contributing to an extraordinarily quiet cabin.

The Tiida literally slides through the air thanks to its aerodynamically sloped bonnet and windscreen, and sculpted rear. Add agile, precisely weighted steering for brisk control and secure handling. Increased road and trace stability. Distinguished body motion control. Improved shocks. And high specification suspension for a ride that's smoother than smooth. Fuse that with sub-ventilation that effectively cools the entire cabin without direct airflow, luxurious Tempur pillow seats and lavishly soft door and centre console armrests. You'll begin to see why you don't just drive in a Nissan Tiida, you revel in it.





## SMART, SOPHISTICATED SENSIBILITY

11

Spacious, modern and sophisticated, the Nissan Tiida sedan combines distinctive styling and thrilling performance with the utmost in driver friendliness. With our range of five derivatives, two engine sizes and manual or automatic transmissions in the 1.6, there's a Tiida sedan that's made for you.

The Tiida sedan exudes dignified, modern elegance based on meticulous details. The sculpted bonnet and gentle curves in all the right places create a dynamic appearance. The refined wheel arches emphasise an understated confidence. And the wide, delicately-featured grille hints at a sportier drive.

The large, modern cabin provides ample legroom and headspace, and is beautifully finished with classic woodgrain panels on the high-end models and luxuriously soft seating. And with a substantial 467 litre boot capacity, there's more than enough room for whatever you need, wherever you're going. All in all, a true reflection of every part of you.





The Nissan Tiida is a car designed to be driven and enjoyed. As such, it's equipped with all the active and passive safety features required to ensure complete peace of mind. Electric power steering across all models, ABS anti-lock braking, EBD (Electronic Brake force Distribution) and Brake Assist ensure maximum grip and control. So you can manoeuvre agilely around tricky situations. And powerful halogen headlights provide a wide arc of strong illumination to cut through darkness and bad weather.

The Tiida Visia+ and Acenta models come standard with the dual front airbags and curtain airbags are available on Acenta models. Further protection is offered by a high mounted stop lamp, front seatbelt pre-tensioner and a warning triangle. Foglamps on high-end models, an immobiliser and NATS (Nissan Anti-Theft System) security on all models add to the feeling of safety and security that comes from knowing that you have the best possible protection on your side.





The Nissan Tiida's stylish 15" steel wheels, and the light-weight 15" alloy wheels (on high-end models) add a subtle glamour to its already breathtaking style.



The tasteful, high quality upholstery material covering the comfortable seats is a treat, both to look at and to touch.



Tricot Cloth  
Sedan H30



Suede Tricot Cloth  
Sedan H31; H32 & Hatch H35



Flat Woven Cloth & Plain Leather  
Sedan H33 & Hatch H36



Plain Leather & Leather with Detail  
Sedan H34 & Hatch H37

With eight distinctive, vibrant colours to choose from, you won't have any trouble picking one that perfectly complements every aspect of your character.

Metallic colours



Olive Gold  
E32



Starling Blue  
B16



Claret Red  
AY4



Thermal Gold  
K32



Misty Blue  
K31



Bright Silver  
KYO

Solid colours



Infinite Black  
KH3



Arctic White  
QM1

# TECHNICAL SPECIFICATIONS

## TIIDA

| Model Description                         | 4 DOOR SEDAN            |                         |                         |                          |                          | 5 DOOR HATCH            |                         |                          |
|---|-------------------------|-------------------------|-------------------------|--------------------------|--------------------------|-------------------------|-------------------------|--------------------------|
|   | *1.6 Visia M/T (H30)    | **1.6 Visia+ M/T (H31)  | ***1.6 Visia+ A/T (H32) | ****1.6 Acenta M/T (H33) | ****1.8 Acenta M/T (H34) | **1.6 Visia+ M/T (H35)  | ***1.6 Acenta M/T (H36) | ****1.8 Acenta M/T (H37) |
| Transmission                              | 5 speed manual          | 5 speed manual          | 4 speed automatic       | 5 speed manual           | 5 speed manual           | 5 speed manual          | 5 speed manual          | 6 speed manual           |
| Seating capacity                          | 5                       | 5                       | 5                       | 5                        | 5                        | 5                       | 5                       | 5                        |
| <b>ENGINE</b>                             |                         |                         |                         |                          |                          |                         |                         |                          |
| Number of cylinders                       | 4 Cylinders             | 4 Cylinders             | 4 Cylinders             | 4 Cylinders              | 4 Cylinders              | 4 Cylinders             | 4 Cylinders             | 4 Cylinders              |
| Maximum torque Nm                         | 153                     | 153                     | 153                     | 153                      | 175                      | 153                     | 153                     | 175                      |
| Maximum power kW                          | 80                      | 80                      | 80                      | 80                       | 95                       | 80                      | 80                      | 95                       |
| Engine displacement (cc)                  | 1 598                   | 1 598                   | 1 598                   | 1 598                    | 1 798                    | 1 598                   | 1 598                   | 1 798                    |
| Fuel type                                 | Unleaded petrol         | Unleaded petrol         | Unleaded petrol         | Unleaded petrol          | Unleaded petrol          | Unleaded petrol         | Unleaded petrol         | Unleaded petrol          |
| Fuel injection                            | Multi-point             | Multi-point             | Multi-point             | Multi-point              | Multi-point              | Multi-point             | Multi-point             | Multi-point              |
| <b>DRIVE TRAIN</b>                        |                         |                         |                         |                          |                          |                         |                         |                          |
| Gear ratio 1st                            | 3.727                   | 3.727                   | 2.861                   | 3.727                    | 3.727                    | 3.727                   | 3.727                   | 3.727                    |
| 2nd                                       | 2.048                   | 2.048                   | 1.562                   | 2.048                    | 2.105                    | 2.048                   | 2.048                   | 2.105                    |
| 3rd                                       | 1.393                   | 1.393                   | 1.0                     | 1.393                    | 1.452                    | 1.393                   | 1.393                   | 1.452                    |
| 4th                                       | 1.029                   | 1.029                   | 0.697                   | 1.029                    | 1.171                    | 1.029                   | 1.029                   | 1.171                    |
| 5th                                       | 0.821                   | 0.821                   | N/A                     | 0.821                    | 0.971                    | 0.821                   | 0.821                   | 0.971                    |
| 6th                                       | N/A                     | N/A                     | N/A                     | N/A                      | 0.811                    | N/A                     | N/A                     | 0.811                    |
| Reverse                                   | 3.545                   | 3.545                   | 2.31                    | 3.545                    | 3.687                    | 3.545                   | 3.545                   | 3.687                    |
| Final drive ratio                         | 4.067                   | 4.067                   | 4.072                   | 4.067                    | 3.933                    | 4.067                   | 4.067                   | 3.933                    |
| Driven wheels                             | Front                   | Front                   | Front                   | Front                    | Front                    | Front                   | Front                   | Front                    |
| <b>DIMESIONS</b>                          |                         |                         |                         |                          |                          |                         |                         |                          |
| Overall length of vehicle (mm)            | 4395                    | 4395                    | 4395                    | 4395                     | 4395                     | 4205                    | 4205                    | 4205                     |
| Overall width of vehicle (mm)             | 1695                    | 1695                    | 1695                    | 1695                     | 1695                     | 1695                    | 1695                    | 1695                     |
| Overall height of vehicle (mm)            | 1545                    | 1545                    | 1545                    | 1545                     | 1545                     | 1545                    | 1545                    | 1545                     |
| Wheelbase (mm)                            | 2600                    | 2600                    | 2600                    | 2600                     | 2600                     | 2600                    | 2600                    | 2600                     |
| Fuel tank capacity (l)                    | 52                      | 52                      | 52                      | 52                       | 52                       | 52                      | 52                      | 52                       |
| <b>WHEELS/TYRES</b>                       |                         |                         |                         |                          |                          |                         |                         |                          |
| Wheel type / size                         | 15" Steel               | 15" Steel               | 15" Steel               | 15" Alloy                | 15" Alloy                | 15" Steel               | 15" Alloy               | 15" Alloy                |
| Wheel dimensions (front;back)             | 185/65 R15              | 185/65 R15              | 185/65 R15              | 185/65 R15               | 185/65 R15               | 185/65 R15              | 185/65 R15              | 185/65 R15               |
| Spare wheel                               | Normal size (15" Steel) | Normal size (15" Steel) | Normal size (15" Steel) | Normal size (15" Steel)  | Normal size (15" Steel)  | Normal size (15" Steel) | Normal size (15" Steel) | Normal size (15" Steel)  |
| <b>PERFORMANCE</b>                        |                         |                         |                         |                          |                          |                         |                         |                          |
| Top speed km/h                            | 190                     | 190                     | 180                     | 190                      | 195                      | 190                     | 190                     | 195                      |
| Minimum turning circle (m) kerb to kerb   | 5.4                     | 5.4                     | 5.4                     | 5.4                      | 5.4                      | 5.4                     | 5.4                     | 5.4                      |
| wall to wall                              | 5.5                     | 5.5                     | 5.5                     | 5.5                      | 5.5                      | 5.5                     | 5.5                     | 5.5                      |
| <b>SAFETY</b>                             |                         |                         |                         |                          |                          |                         |                         |                          |
| Airbags                                   | Driver only             | Driver & Pass.          | Driver & Pass.          | Driver, Pass. & Curtain  | Driver, Pass. & Curtain  | Driver & Pass.          | Driver, Pass. & Curtain | Driver, Pass. & Curtain  |
| ABS                                       | Not available           | Standard                | Standard                | Standard                 | Standard                 | Standard                | Standard                | Standard                 |
| Electronic Brake force Distribution (EBD) | Not available           | Standard                | Standard                | Standard                 | Standard                 | Standard                | Standard                | Standard                 |
| Brake Assist System (BAS)                 | Not available           | Standard                | Standard                | Standard                 | Standard                 | Standard                | Standard                | Standard                 |
| Brake type                                | Front disc; rear drum   | Front disc; rear drum   | Front disc; rear drum   | Front disc; rear drum    | Front disc; rear drum    | Front disc; rear drum   | Front disc; rear drum   | Front disc; rear drum    |
| Foglamps                                  | Not available           | Not available           | Not available           | Front                    | Front                    | Not available           | Front                   | Front                    |
| High mounted stop lamp                    | Standard                | Standard                | Standard                | Standard                 | Standard                 | Standard                | Standard                | Standard                 |
| Child-proof rear door lock                | Standard                | Standard                | Standard                | Standard                 | Standard                 | Standard                | Standard                | Standard                 |
| Front seatbelt pre-tensioners             | Standard                | Standard                | Standard                | Standard                 | Standard                 | Standard                | Standard                | Standard                 |
| <b>SECURITY</b>                           |                         |                         |                         |                          |                          |                         |                         |                          |
| Immobiliser                               | Standard                | Standard                | Standard                | Standard                 | Standard                 | Standard                | Standard                | Standard                 |
| NATS security                             | Standard                | Standard                | Standard                | Standard                 | Standard                 | Standard                | Standard                | Standard                 |

# TECHNICAL SPECIFICATIONS

## TIIDA

| Model Description                   | 4 DOOR SEDAN         |                        |                         |                          |                          | 5 DOOR HATCH           |                         |                          |
|-------------------------------------|----------------------|------------------------|-------------------------|--------------------------|--------------------------|------------------------|-------------------------|--------------------------|
|                                     | *1.6 Visia M/T (H30) | **1.6 Visia+ M/T (H31) | ***1.6 Visia+ A/T (H32) | ****1.6 Acenta M/T (H33) | ****1.8 Acenta M/T (H34) | **1.6 Visia+ M/T (H35) | ***1.6 Acenta M/T (H36) | ****1.8 Acenta M/T (H37) |
| Transmission                        | 5 speed manual       | 5 speed manual         | 4 speed automatic       | 5 speed manual           | 5 speed manual           | 5 speed manual         | 5 speed manual          | 6 speed manual           |
| <b>COMFORT &amp; CONVENIENCE</b>    |                      |                        |                         |                          |                          |                        |                         |                          |
| 60/40 Rear seat split               | Not available        | Standard               | Standard                | Standard                 | Standard                 | Standard               | Standard                | Standard                 |
| Sliding rear seats                  | Not available        | Not available          | Not available           | Not available            | Not available            | Not available          | Standard                | Standard                 |
| Legroom rear mm +                   | 653                  | 653                    | 653                     | 653                      | 653                      | 650                    | 650                     | 650                      |
| Luggage capacity (VDA)              | 467                  | 467                    | 467                     | 467                      | 467                      | 289                    | 289                     | 289                      |
| Fuel flap release                   | Remote               | Remote                 | Remote                  | Remote                   | Remote                   | Remote                 | Remote                  | Remote                   |
| Central locking                     | With remote          | Standard               | Standard                | Standard                 | Standard                 | Standard               | Standard                | Standard                 |
| Electric power steering             | Standard             | Standard               | Standard                | Standard                 | Standard                 | Standard               | Standard                | Standard                 |
| Electric windows                    | Not available        | Front and Rear         | Front and Rear          | Front and Rear           | Front and Rear           | Front and Rear         | Front and Rear          | Front and Rear           |
| Door mirrors                        | Body colour; manual  | Body colour; power     | Body colour; power      | Body colour; power       | Body colour; power       | Body colour; power     | Body colour; power      | Body colour; power       |
| Steering wheel: Tilt adjustment     | Standard             | Standard               | Standard                | Standard                 | Standard                 | Standard               | Standard                | Standard                 |
| Audio system                        | Not available        | AM/FM/CD               | AM/FM/CD                | AM/FM/CD                 | AM/FM/CD                 | AM/FM/CD               | AM/FM/CD                | AM/FM/CD                 |
| Air-conditioner                     | Manual               | Manual                 | Manual                  | Manual                   | Manual                   | Manual                 | Manual                  | Auto                     |
| Front wipers                        | 2 speed intermittent | 2 speed intermittent   | 2 speed intermittent    | 2 speed intermittent     | 2 speed intermittent     | 2 speed intermittent   | 2 speed intermittent    | 2 speed intermittent     |
| Rear wipers                         | Not available        | Not available          | Not available           | Not available            | Not available            | Standard               | Standard                | Standard                 |
| Rear window de-mister               | Standard             | Standard               | Standard                | Standard                 | Standard                 | Standard               | Standard                | Standard                 |
| Interior light logic                | Standard             | Standard               | Standard                | Standard                 | Standard                 | Standard               | Standard                | Standard                 |
| Map reading light                   | Standard             | Standard               | Standard                | Standard                 | Standard                 | Standard               | Standard                | Standard                 |
| Luggage area lamp                   | Standard             | Standard               | Standard                | Standard                 | Standard                 | Standard               | Standard                | Standard                 |
| Ashtray                             | Standard             | Standard               | Standard                | Standard                 | Standard                 | Standard               | Standard                | Standard                 |
| <b>TRIMS &amp; SEATING</b>          |                      |                        |                         |                          |                          |                        |                         |                          |
| Dashboard                           | Aluminium style      | Aluminium style        | Aluminium style         | Woodgrain style          | Woodgrain style          | Aluminium style        | Aluminium style         | Aluminium style          |
| Seat upholstery                     | Cloth                | Cloth                  | Cloth                   | Leather facing & cloth   | Leather facing           | Cloth                  | Leather facing & cloth  | Leather facing           |
| Soft touch interior                 | Not available        | Standard               | Standard                | Standard                 | Standard                 | Standard               | Standard                | Standard                 |
| <b>DRIVER'S AREA</b>                |                      |                        |                         |                          |                          |                        |                         |                          |
| Clock; digital                      | Not available        | Standard               | Standard                | Standard                 | Standard                 | Standard               | Standard                | Standard                 |
| Tachometer; analogue                | Standard             | Standard               | Standard                | Standard                 | Standard                 | Standard               | Standard                | Standard                 |
| Speedometer; analogue               | Standard             | Standard               | Standard                | Standard                 | Standard                 | Standard               | Standard                | Standard                 |
| Trip meter; digital                 | Standard             | Standard               | Standard                | Standard                 | Standard                 | Standard               | Standard                | Standard                 |
| Fuel meter                          | Standard             | Standard               | Standard                | Standard                 | Standard                 | Standard               | Standard                | Standard                 |
| Low fuel warning light              | Standard             | Standard               | Standard                | Standard                 | Standard                 | Standard               | Standard                | Standard                 |
| Airbag check warning light          | Standard             | Standard               | Standard                | Standard                 | Standard                 | Standard               | Standard                | Standard                 |
| ABS check warning light             | N/A                  | Standard               | Standard                | Standard                 | Standard                 | Standard               | Standard                | Standard                 |
| Engline oil pressure warning lights | Standard             | Standard               | Standard                | Standard                 | Standard                 | Standard               | Standard                | Standard                 |
| Water temp. indicator warning light | Standard             | Standard               | Standard                | Standard                 | Standard                 | Standard               | Standard                | Standard                 |
| Door open warning                   | Standard             | Standard               | Standard                | Standard                 | Standard                 | Standard               | Standard                | Standard                 |
| Driver seatbelt reminder            | Standard             | Standard               | Standard                | Standard                 | Standard                 | Standard               | Standard                | Standard                 |
| Headlamp-on reminder chime          | Standard             | Standard               | Standard                | Standard                 | Standard                 | Standard               | Standard                | Standard                 |

\* Visia - base-level spec

\*\*Visia+ - mid-level spec

\*\*\*Acenta - high-level spec

+ Measurement taken with seat in backmost position, seat back reclined at 25 degrees



**All Nissan vehicles now come with a Microdot high-tech anti-theft security feature.**

Since 4 October 2006, all new Nissan vehicles are fitted with the Microdot hi-tech anti-theft security feature as standard. The Microdot technology offers added peace of mind from a security perspective. A sticker applied to the vehicle is a visual indication that the vehicle has been fitted with Nissan Microdot, and this is also a deterrent to would-be thieves. Some insurance houses are offering premium discounts to customers if they have this anti-theft feature fitted to their vehicles.

MyNissan.co.za

All Nissan vehicle owners become part of the Nissan family, so the MyNissan site has been created exclusively to enhance the Nissan Owner's experience. Once you register, you'll be informed on special offers, promotions, vehicle launches and events, and a host of other benefits. You can also expect to receive service announcements, a full service guide, vehicle care advice and convenient reminders when your vehicle licence renewal is due. The Nissan Call Centre staff can be contacted via email to reply to any queries. And the site offers a link where you can share information and adventure stories with other Nissan owners.